

AUDIO CASSETTE ACCESSORIES

Audio Cassette Recording Tapes

Economy bulk pack, unboxed, five screw assembly. Qualifying Standard: BASF.



KCDA No.	Description	U/M
29905 60 Minutes (30x2)25/Pkg
29904 90 Minutes (45x2)25/Pkg

Audio Cassette Recording Tapes

This audio cassette tape's wide-frequency response and uniform output assure audio and Dictation recording accuracy even with repeated usage. Designed for high-use applications. Qualifying Standard: Maxell.



KCDA No.	Description	U/M
29893 30 Minutes (15x2)Ea
29900 60 Minutes (30x2)Ea
29899 90 Minutes (45x2)Ea

Audio Cassette Tape Boxes

Hard plastic cassette case that holds a "J" card with rounded corners. Holds a "J" card and 1 cassette (not included). Qualifying Standard: Norelco.



KCDA No.	U/M
2990925/Pkg

Maxell Audio Cassette Head Cleaner

Economical, non-abrasive, two-step audio head wet cleaning system; cleans entire tape travel path of contaminants, tape heads, guides, capstan & pinch rollers; use after every 20 hours of use or when experiencing loss of sound quality. Maxell, No Substitute.



KCDA No.	Mfg. No.	U/M
29914 191018Ea

AUDIO PLAYERS

Califone Cassette Player/Recorder

Cassette player/recorder, uses 4 "C" batteries (not included) or 110v detachable power adapter (included), 500mW amplifier, 3.5mm mic, 2.5mm remote mic. Dimensions: 10-3/4" long x 5-1/2" wide x 2" high. Weight 4 lb. Califone, No Substitute.



KCDA No.	Mfg. No.	U/M
29126CAS1500Ea

CD Player/Cassette Player-Recorder

Combination cassette recorder/player and CD player, vibration and skip resistant CD deck with variable speed CD control. 7 watts amplifier output, 2-4" built-in speakers with left/right balance, records audio tapes from CDs, 5 position listening center. Eiki. No Substitute.



KCDA No.	Mfg. No.	U/M
291088080AEa

Hamilton Classroom Cassette Player

Cassette player/recorder, 1 watt speaker, two 1/4" headphone jacks, Uses 4 "C" batteries (not included) or attached 5 foot 120 volt AC cord, built in condenser microphone. Hamilton, No Substitute.



• For batteries see KCDA No. 29653.

KCDA No.	Mfg. No.	U/M
29124HA802Ea

Hamilton Cassette/CD/AM/FM Radio Boom Box

Portable Boom Box, includes cassette recorder, records from CD or built in microphone. Programmable CD player, AM/FM radio tuner, six 1/8" headphone jacks, 4 watt speaker, uses 8 "D" batteries (not included) or AC 120 volt cord. Dimensions: 14" wide x 10" high x 8" deep. Weight: 7 lbs. Hamilton, No Substitute.



• For batteries see KCDA No. 29654.

KCDA No.	Mfg. No.	U/M
29125MPC-5050Ea

DVD DISKS

DVD+R Recordable Disks

4.7GB storage, more than six times the storage capacity of a CD. Great for audio, video or data storage. Durable write-once format with long archival life. Write-compatible with DVD drives and recorders supporting DVD+R. 16x, 50 per spindle. Memorex, No Substitute.



KCDA No.	Mfg. No.	U/M
2927732025619Ea

DVD-R Recordable Disks

Write once format may not be altered once data is written to the disc. Read compatible with the majority of DVD-ROM drives and DVD video players. Single-sided, 4.7 GB. Multimedia storage such as combined data, music/video. Branded with manufacturers logo on one side. Surface color silver packaging spindle (plastic container, does not include jewel case or inserts) 50/spindle. Qualifying Standard: Memorex.

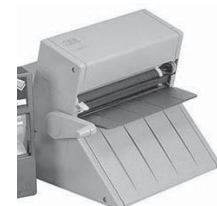


KCDA No.	U/M
29279Ea

LAMINATING MACHINES

3M Desktop Laminator

Non-electric, heat free, hand operated laminator uses adhesive film cartridges. Portable, lightweight, versatile, safe. Integrated cutoff blade. Laminates any length document. 3M, No Substitute.



KCDA No.	Mfg. No.	U/M
29005LS950Ea

Ultima 35 EZLoad Laminator

Thermal roll laminator with unique EzLoad roll film is simple to use, fast and flexible. Offers lamination width up to 12", all lengths. Runs NAP II film from 1.7 mil up to 10 mil thickness. Variable temperature. 1 minute warm-up time. Fixed speed of 3' per min. Weighs 35.2 lb. GBC, No Substitute.



• Uses film KCDA Nos. 29250, 29251 & 29252.

KCDA No.	Mfg. No.	U/M
29001	1701680	Ea

Ultima 65 Laminator

Protects sheets up to 27", variable speed control, reverse switch, sliding blade cutter. Weighs 104 lbs. dimensions: 21" long x 32.5" wide x 12.5" high. GBC, No Substitute.



• Use Laminating Film KCDA Nos.: 29278, 29282, 29283, 29284 & 29285.

KCDA No.	Mfg. No.	U/M
29000	1710740	Ea

Pinnacle 27 EZLoad Laminator

27" wide roll laminator, warm up time is 6-9 minutes, variable temperature control for use with Nap-Lam I and II film up to 3mil. Variable speed control. Patented EZLoad eliminates incorrectly loaded film problems. Weight: 106 lbs. Dimension: 35-1/2" wide x 21" long x 14-1/4" high. 1 year warranty. GBC, No Substitute.



• Uses EZ Load Film see KCDA Nos. 29310, 29311, 29312 & 29313.

KCDA No.	Mfg. No.	U/M
29004	1701720EZ	Ea

LAMINATING SUPPLIES / DRY MOUNT TISSUE

Dry Mount Tissue

Excellent general-purpose tissue that works well with RC or fiber based prints. Has a very low activating temperature of 165 degrees for use with items sensitive to heat. It is ideal for items like ink jet media where high heat is not possible. Works well with substrates such as cardboard and foam board. The product bonds as it cools to provide a strong lasting bond but can be removed by reheating the subject to 200 degrees. 20-1/2" x 50' Qualifying Standard: Drylam.



KCDA No.	U/M
29280	1/Roll

LAMINATING SUPPLIES / FILM

3M Laminating Film

Cartridge for desktop laminator. Laminates both sides, 8-1/2"x11", 100 ft. roll. 3M, No Substitute.



• Fits KCDA No. 29005 Laminator.

KCDA No.	Mfg. No.	U/M
29230	DL951	Ea

Nap-Lam I Laminating Film

The most economical polyester based thermal film, provides excellent bonding strength for items with porous surfaces and light ink coverage. Clear, roll is marked before the end. 1.5 mil, 500 foot rolls. GBC, No Substitute.



• Use in laminator KCDA No. 29000.

KCDA No.	Width	Core	Mfg. No.	U/M
29282	9"	1"	3000001	2 Rolls/Ctn
29283	12"	1"	3000002	2 Rolls/Ctn
29284	18"	1"	3000003	2 Rolls/Ctn
29285	25"	1"	3000004	2 Rolls/Ctn
29272	25"	2-1/4"	3000007	2 Rolls/Ctn
29271	27"	1"	3126061	2 Rolls/Ctn

Nap-Lam II Laminating Film

Polyester-based thermal laminating film, the rolls are on 1" cores, designed to run at a lower temperature and promote excellent adhesion with great clarity on coated/glossy papers and heavy ink coverage. GBC, No Substitute.



• Use in KCDA No. 29000 Laminator.

KCDA No.	Size	Weight	Mfg. No.	U/M
29278	27"x500'	1.5 mil	3125410	2 Rolls/Ctn
29273	25"x200'	3 mil	3125702	2 Rolls/Ctn
29274	27"x250'	3 mil	3125710	2 Rolls/Ctn
29275	25"x200'	5 mil	3125901	2 Rolls/Ctn

GBC Pinnacle 27 EZLoad Laminating Film

This clear glossy EZload roll film utilizes patented technology to virtually eliminate costly film loading errors. Color-coded end caps help make film loading a snap eliminating costly service calls and making it virtually impossible to load your laminator backwards. This film is designed exclusively for use with GBC Pinnacle EZload roll laminators. GBC, No Substitute.



• Fits KCDA No. 29004, Pinnacle 27 EZLoad Laminator.
• *KCDA No. 29313 is Low Melt.

KCDA No.	Weight	Size	Mfg. No.	U/M
29310	1.5 mil	25"x500'	3748201EZ	2/Box
29312	1.7 mil	25"x500'	3748203EZ	2/Box
29313	*3.0 mil	25"x250'	3748204EZ	2/Box
29311	3.0 mil	25"x250'	3748202EZ	2/Box

Ultima 35 EZLoad Laminating Film

EZLoad roll film. GBC, No Substitute.

• Fits in KCDA No. 29001 Ultima 35 EZLoad Laminator.



KCDA No.	Weight	Size	Mfg. No.	U/M
29250	1.7 mil	12"x300'	3125365EZ	2/Box
29251	3.0 mil	12"x200'	3125913EZ	2/Box
29252	5.0 mil	12"x100'	3000052EZ	2/Box

*** Don't See What You Need Here?**
We can source it for you.

Contact KCDA customer service with the details at customerservice@kcda.org or 800-422-5019.

Audio Visual

LAMINATING SUPPLIES / POUCHES

Laminating Pouches

Two sided 3 mil per side, lamination pouches encapsulate documents to provide outstanding protection from dirt, water and wear. Each box comes with 2 carriers to keep the laminator clean. Qualifying Standard: Dry-Lam.



KCDA No.	Size	U/M
29295	9"x12"	100/Box
29296	12"x15"	100/Box
29297	18"x24"	50/Box

Laminating Pouches, Business Card

Business card size, 2-1/4"x3-3/4", 5 mil, heat sealing. Qualifying Standard: Dry-Lam.



KCDA No.	U/M
29301	100/Box

LAMINATING SUPPLIES / SHEETS

Laminating Sheets

11-5/8"x9-1/16", gloss, 7 mil each side for a sturdy cover. Self-adhesive, permanent, no heat or machine needed. 2-sided protection in one easy application. Qualifying Standard: 3M.



KCDA No.	U/M
95630	25/Pkg

LAMINATOR CABINET

GBC Laminator Cabinet

Deluxe locking laminator cabinet, rolling casters for mobility, slide out shelf, supports laminators up to 35" and 200 lbs. Dimension: 36" wide x 18" deep x 30" high. 1 year Manufacturer warranty. GBC, No Substitute.



KCDA No.	Mfg. No.	U/M
29016	1154314	Ea

LISTENING STATION & HEADPHONES

Headphones Mono/Stereo

These headphones are switchable mono/stereo, 3.5mm mini plug w/snap-on 1/4" adapter, 10 foot coiled cord, dual volume controls on ear cups. 1 year warranty. Qualifying Standard: Califone.



KCDA No.	Mfg. No.	U/M
29019	3068AV	Ea

6 Jack Listening Center

Featuring HA-5 headphones and 4-in-1 stereo/mono jack box with volume control. This set can be packed safely away in the included durable polypropylene plastic case. Qualifying Standard: Hamilton.



KCDA No.	U/M
81580	Ea

Listening Station

With volume control, free standing, case or table mountable, permanently attached cord, impact-resistant. Califone. No Substitute.



KCDA No.	Description	Mfg. No.	U/M
29015	8 Station	1218AVPY	Ea

MICROPHONES

General Purpose Microphone

Approximately 4' cord with stand, 300 ohm, on-off switch, 3.5 mini - 2.5 sub-mini plugs. Qualifying Standard: Cal Rad.



KCDA No.	U/M
29017	Ea

General Purpose Microphone

Unidirectional handheld microphone with 10' cable and 3.5mm mini-plug attached. 1/4" adapter included. Frequency 80-12,000 Hz. 500 ohms. Qualifying Standard: Audio-Technica.



KCDA No.	U/M
29018	Ea

PROJECTOR SUPPLIES / CARTS

Overhead Projection Cart

Adjustable height from 24" to 42", shelf size is 18" by 24". 4" casters, 2 locking, cable pass through holes, 2 outlet electric assembly. Qualifying Standard: Bretford.



KCDA No.	Color	U/M
29087	Quartz	Ea

PROJECTOR SUPPLIES / EQUIPMENT STRAPS

Equipment Straps

Nylon web strap with a steel grip buckle, 1" wide. Qualifying Standard: Abolins.



KCDA No.	Size	U/M
29188	9 ft Long for 20" Monitors	Ea

PROJECTOR SUPPLIES / LAMPS / "D" SERIES

Projection Lamps "D" Series

KCDA No.	ANSI		Average		U/M
	Code	Watts	Volts	Hours	
29519	DAH	500	120	200	Ea
29523	DAY/DAK	500	120	200	Ea
29618	DRC/DRB	1000	120	50	Ea
29550	VY	650	120	25	Ea
29469	DYP	600	120	75	Ea

PROJECTOR SUPPLIES / LAMPS / "E" SERIES

Projection Lamps "E" Series

KCDA No.	ANSI		Average		U/M
	Code	Watts	Volts	Hours	
29495	EHA	500	120	75	Ea
29540	EHC	500	120	300	Ea
29426	EHG	750	120	2000	Ea
29642	EHJ	250	24	50	Ea
29456	ELH	300	120	35	Ea
29433	EMM/EKS	250	24	50	Ea
29435	ENH	250	120	175	Ea
29459	ENX	360	82	75	Ea
29458	ENX-5	360	86	75	Ea
29639	ENZ	50	30	25	Ea
29422	ESJ	85	82	40	Ea
29453	EVD	400	36	50	Ea
29461	EVW	250	82	50	Ea
29425	EXY	250	82	200	Ea
29442	EYB	360	82	75	Ea
29443	EYB-5	360	86	75	Ea
29462	EYW	500	130	2000	Ea
29580	EXR	300	82	35	Ea

PROJECTOR SUPPLIES / LAMPS / "F" SERIES

Projection Lamps "F" Series

KCDA No.	ANSI		Average		U/M
	Code	Watts	Volts	Hours	
29640	FXL	410	82	50	Ea
29464	FCB	600	120	75	Ea
29632	FCS	150	24	50	Ea
29619	FEL	1000	120	300	Ea
29480	FFJ	600	120	75	Ea
29641	FNT	275	24	75	Ea
29457	FHS	300	82	70	Ea
29640	FXL	410	82	50	Ea
29645	FXL-5	410	86	50	Ea



Please visit our website www.kcda.org for current prices on all products listed in the KCDA Reference Guide.

PROJECTOR SUPPLIES / POWER STRIP

Bretford AV Cart Electrical Unit

This Electrical unit attaches to any steel Bretford television, audio visual, overhead projector cart, or security center without the use of tools. 6 electrical outlets with surge and overload protection and an on/off switch.



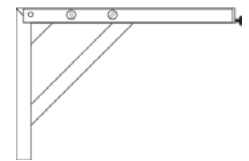
20' long, 3-wire power cord with grounded plug. Mounting bracket doubles as a cord winder. Includes all hardware for mounting to carts and retrofits onto existing Bretford carts by using pre-drilled holes in the shelf. Bretford, No Substitute.

KCDA No.	Desc	Mfg. No.	U/M
29249	6 Outlets	E6	Ea

PROJECTOR SUPPLIES / WALL SCREEN CLAMPS

Draper's Keystone Eliminator Wall Brackets

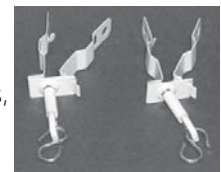
Made with heavy gage angle steel brackets with white epoxy powder coat finish, and adjusts between 18" to 24" from wall by simple wing and bolt adjustment. Qualifying Standard: Da-Lite.



KCDA No.	U/M
29110	Pair

Scissor Clip Wall Screen Brackets

For dropped ceiling-type T-rails, T-bars, supports screens up to 50 pounds. Da-Lite, No Substitute.



KCDA No.	Mfg. No.	U/M
29111	78445	Pair

T-Bar Twist Clips

Mount screens directly to T-irons, on supporting suspended ceilings without tools. Draper, No Substitute.



KCDA No.	Mfg. No.	U/M
29113	227016	Pair

Wall Screen Brackets

Heavy duty plastic wall screen bracket, non-adjustable. Extends wall screen 6" out from wall, white. Qualifying Standard: Da-Lite.



KCDA No.	U/M
29114	2/Box

PROJECTOR SUPPLIES / WALL SCREENS

Projection Screen

Projection Screen, 84"x84", matte white, wall or ceiling. Qualifying Standard: Da-Lite, Draper.



KCDA No.	U/M
29168	Ea

Projection Wall Screens

Fiberglass, matte white, cam lock metal roller system, mechanical pull down locks at intervals. Qualifying Standard: Da-Lite.



KCDA No.	Size	U/M
29120	60x60	Ea
29130	70x70	Ea
29135	96x96	Ea

Tripod Projection Screens

Matte white, fiberglass, cam lock metal roller system, built-in keystone eliminator and plunger lock for secure setting, gable constructed aluminum legs, height adjusts to room with an 8' ceiling. Qualifying Standard: Buhl.



KCDA No.	Size	U/M
29165	60" x 60"	Ea
29166	70" x 70"	Ea

Tripod Projection Screen

The matte white fabric is flame retardant and mildew resistant with a 1 inch border on screen sides. With a built-in keystone eliminator which tilts the screen forward to compensate for distorted images. Made of durable steel construction with a rugged metal case, it folds down for easy storage or transport and weighs 29 pounds. The screen case and tripod adjust to accommodate ceiling height. Qualifying Standard: Buhl.



KCDA No.	U/M
29170	Ea

RADIOS / TWO WAY

• NOTE: if you are using your two-way radios mainly inside and around buildings, then choose UHF. If you are using your two-way radios for communication outside, then choose VHF.

Kenwood Pro-Talk Two-Way Radio

UHF frequency, 461-470 MHz, 2 watt, 4 channel. Lithium battery offers 22 hours battery life. Coverage to 20 floors, up to 6 miles. Lightweight and durable, resistant to dust and water. Includes Lithium rechargeable battery pack, drop-in charger, AC charging adapter, belt clip. Kenwood, No Substitute.



KCDA No.	Mfg. No.	U/M
29234	TK-3300U4P	Ea

Kenwood ProTalk VHF/UHF Two-Way Radio

Engineered to provide ease of use and audio clarity, even in noisy environments, rugged reliability for dependable communications in all weather conditions. includes Li-Ion battery, 3-hour charger, belt clip and removable antenna. Other features include voice annunciation, time out timer, battery save, low-battery warning, channel confirmation mode, programmable frequency scrambler by channel and 4-color LEDs (blue, red, orange, green). Year Radio Warranty. Kenwood, No Substitute.



KCDA No.	Mfg. No.	U/M
29235	TK3400U16P	Ea

Motorola Two-Way Radio

With a possible range of 27 miles, emergency alert feature, and built-in LED flashlight. 7 NOAA channels with 22 frequency capacity and 121 privacy codes. Includes 2 radios, 2 belt clips, 1 dual charger and 2 NiMH rechargeable battery packs. Motorola, No Substitute.



KCDA No.	Mfg. No.	U/M
29223	MJ270R	Pkg

TELEVISION SUPPLIES / WALL PLATFORMS

VCR/DVD Bracket

Bracket only fits the Vantage Point platform television wall mount KCDA No 29142. Maximum VCR width: 17.25", maximum VCR height: 4.25". It can, also, be special ordered in white. Qualifying Standard: Vantage Point Products.



KCDA No.	U/M
29143	Ea

TRANSPARENCIES / ACETATE ROLLS

3M Overhead Projector Acetate Roll

This acetate is a .005 mil gauge, the spool is 10-3/4" long and the acetate is 10-1/4" long. Fits 3M and most other brands. 3M, No Substitute.



KCDA No.	Mfg. No.	U/M
29207	AF4310	50 Ft

Overhead Projector Acetate Roll

This acetate is a .005 mil gauge, the spool is 10-3/4" long and the acetate is 10-1/4" long. Fits 3M and most other brands. Qualifying Standard: Generic.



KCDA No.	U/M
29206	50 Ft



Please visit our website www.kcda.org for current prices on all products listed in the KCDA Reference Guide.

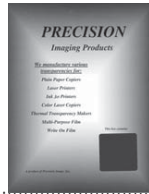
TRANSPARENCIES / COPIER

3M Copier Transparency Film, Hi-Temp
8-1/2"x11", 4 mil, clear, high temperature, universal film for use in plain paper copiers. 3M, No Substitute.



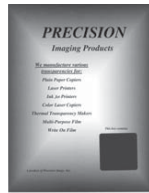
KCDA No. Mfg. No.
29603 PP2950 100/Box

Copier Transparencies
8-1/2"x11", 4 mil, for use on plain paper copiers. 1/2" removable sensing stripe. Precision Graphics, No Substitute.



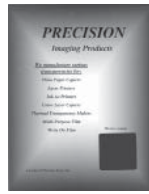
KCDA No. Mfg. No.
29952 10-110 100/Box

Copier Transparencies
8-1/2"x11", 4 mil, for use on plain paper copiers. Qualifying Standard: Precision Graphics.



KCDA No.
29950 100/Box

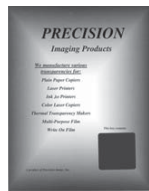
Copier Transparencies, Hi-Temp
8-1/2"x11", 5 mil, for use on plain paper copiers, high-temperature. Qualifying Standard: Precision Graphics.
• *Similar to KCDA No. 29603.*



KCDA No.
29951 100/Box

TRANSPARENCIES / INKJET PRINTER

Inkjet Printer Transparencies
8-1/2"x11", 4 mil, 3/8" removable top stripe. For use on inkjet printers. Precision Graphics, No Substitute.
• *Similar to KCDA No. 29840.*



KCDA No. Mfg. No.
29958 10-405 50/Box

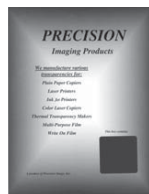
Inkjet Printer Transparencies
8-1/2"x11", 4 mil, clear, removable strip, for use in inkjet printers. 3M Highland, No Substitute.



KCDA No. Mfg. No.
29840 707 50/Box

TRANSPARENCIES / LASER PRINTER

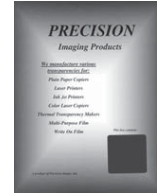
Laser Printer Transparencies
8-1/2"x11", 4 mil. Qualifying Standard: Precision Graphics.



KCDA No.
29956 50/Box

TRANSPARENCIES / THERMAL

Infrared Thermal Transparencies
8-1/2"x11", 4 mil, For use on infrared transparency makers. Precision Graphics, No Substitute.



KCDA No. Mfg. No.
29955 10-204 100/Box

TRANSPARENCIES / WRITE ON

Write-On Transparency Film
8-1/2"x11", crystal clear film. Qualifying Standard: Scott Electric.



KCDA No. Size
29680 5 mil 100/Box
29682 10 mil 100/Box

TRIPOD

Video Tri-pod
Lightweight and easily portable. Extends from 21 inches to 56 inches. Two-way panhead. Maximum load 6-1/2 pounds. Qualifying Standard: Sony.



KCDA No.
28993 Ea

VIDEO CASSETTE SUPPLIES

VHS Video Cassette Storage Case
Full sleeve, black plastic, hubless design, snaps tight. Qualifying Standard: Polyline.



KCDA No.
29922 Ea

VIDEO CASSETTE TAPES

Maxell Mini DV Cassette Tape
MiniDV provides stunning video and razor sharp still images with all MiniDV camcorders. 60 minutes 2-pk. Maxell, No Substitute.



KCDA No. Mfg. No.
29927 298012 2/Pkg

VHS Tape
Designed for repeated record/erase cycles, this VHS video tape produces premium grade picture and sound quality. Great for recording in extended play modes. 6 hour record time in EP mode. Qualifying Standard: Fuji.



KCDA No.
29920 Ea

Audio Visual